



The Neoss Difference

When it comes to your implant, there's only one choice

Contents

Smile again with Neoss dental implants	3
What is a dental implant?	5
Benefits of dental implants	6
Treatment options	8
How does it work?	11
Looking after your implants	11
Why it makes economic sense	12
Why choose a dental implant from Neoss?	15
Supported by science	15
FAQ	15



Smile again with Neoss dental implants

Tooth loss can happen at any stage of life, and can affect your general well-being and confidence in your appearance. A dental implant can restore your oral health and your natural appearance long-term.

A dental Implant is a titanium "root" that integrates directly with the surrounding bone and replaces the function of the natural tooth.

Neoss Implants are made using the best quality medical grade titanium, which is well known for its proven biocompatibility, and have a treated surface to facilitate bone integration. Neoss regulatory approvals include; FDA in USA, CE in Europe, TGA in Australia, CFDA in China and PMDA in Japan to ensure that our products are in compliance with the highest production standards.

The aim is to improve your health, chewing function and aesthetic appearance and once healing and restoration is complete you will be able to enjoy a wide variety of foods again.

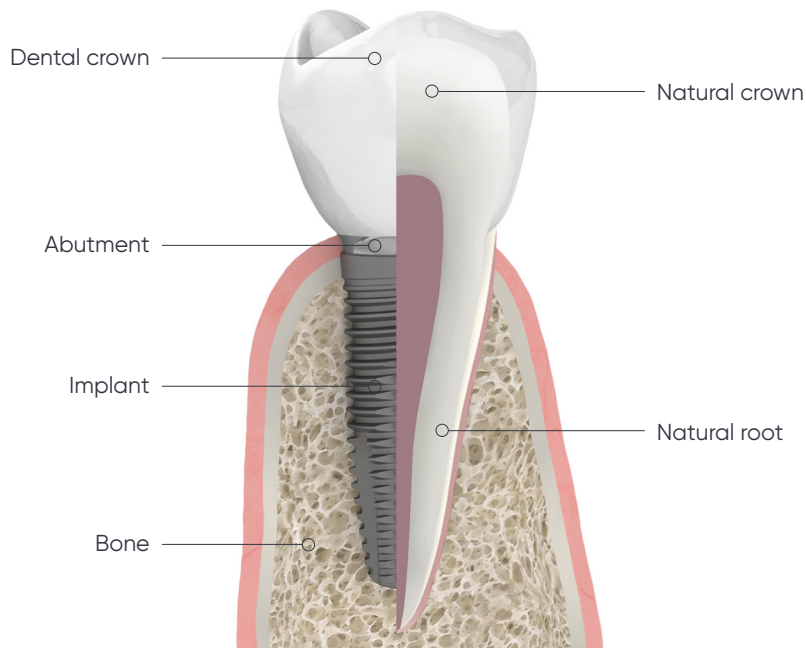
Our implant system puts you first. Every product we develop is designed with patient health and well-being in mind. Incorporating the latest technologies, the best production methods and finest materials, our implant system gives dentists the most intelligent tool for restoring smiles.



Longer-lasting smiles

What is a dental implant?

Dental implants replace the roots of teeth and can be used to anchor a single dental crown, a bridge, or a denture. Dental implants are often screw-shaped components made from titanium.



Neoss implants are incredibly versatile. Our system readily adapts to offer multiple treatment options, making it suitable for most patient types.

Every element has been carefully researched, cleverly conceived, and expertly engineered. All of this enables your dentist to treat you in the simplest and most successful way.

Benefits of dental implants

Restore confidence

Shaped and positioned with precision for the best esthetic result, implants are engineered to restore your natural smile. In addition, implants can restore lost chewing function, giving you the confidence to eat whatever you like again. Implants are designed to feel like your own teeth; they are exceptionally strong and stable, and the difference between an implant and a natural tooth is virtually undetectable.

Protect and preserve your other teeth

When a tooth is missing, the jawbone in that area may regress, causing bone loss. This bone loss might eventually alter the contours of your face.

A conventional bridge doesn't replace tooth roots and often means sacrificing healthy neighboring teeth to anchor it in place. Treatment using a dental implant replaces both the root and visible crown. The implant helps maintain the integrity and shape of the jawbone preserving the natural lines of your face, while acting as a base for an artificial tooth without the need to damage any of your existing teeth.

Longer-lasting smiles

Compared to conventional bridges and prostheses, implants offer far superior long-term benefits.

The initial cost of an implant restoration may seem higher, but with proper care and a good oral hygiene routine, your investment can last a lifetime.



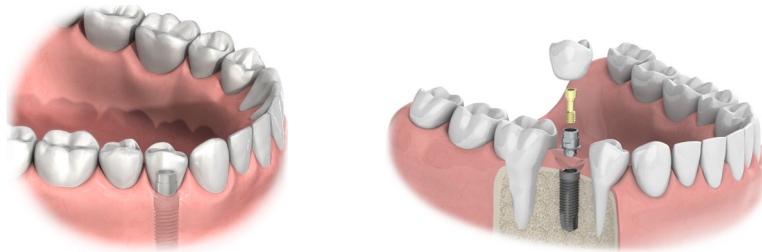
Protect and preserve your other teeth

Treatment options

Single tooth

A single dental implant can be used to replace a whole tooth, whether you've suffered trauma, decay, or a fracture.

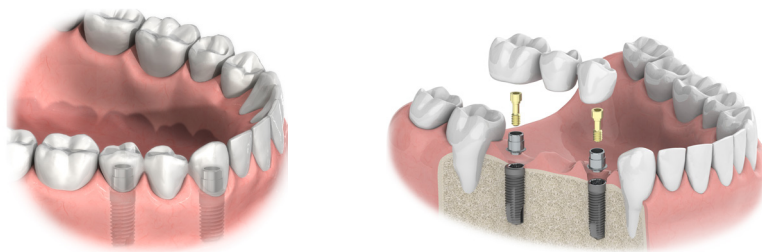
A dental implant is usually comprised of three parts; the implant fixture itself which is inserted directly into the jawbone, the abutment connecting the implant to the crown, and the visible crown.



Several teeth

Dental implant bridges are used to replace several teeth. They work by spanning the gap where teeth are missing.

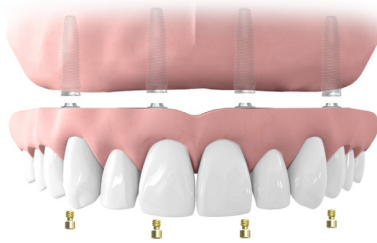
Unlike the standard bridge, where some healthy teeth may be cut down and crowned in order to anchor the prostheses in place, a dental implant bridge is held in place by implants that have been inserted directly into the jaw without compromising any existing healthy teeth.



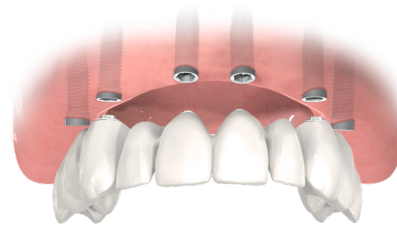
All teeth - fixed

Losing all your teeth can considerably alter your appearance, your ability to eat normally and affect your general confidence. With a full, fixed restoration, it's possible to recover both function and appearance. There are two types of fixed solutions:

Hybrid design/
Fixed denture



Fixed full-arch
implant bridge



- Implants are surgically placed into your jawbone, potentially altering or preventing further loss of bone and gum, rebuilding your natural face shape.
- Implants provide a solid foundation for affixing the denture or bridge. This added security restores your confidence to smile.
- The denture or bridge is fixed into place with screws, giving your new teeth a more permanent and natural feel.

All teeth - removable

Anchored onto dental implants that hold it in place, a removable overdenture replaces all your teeth and feels completely secure in your mouth. Unlike standard dentures, dentures secured by implants won't move while chewing or laughing; therefore, the discomfort associated with loose or ill-fitting dentures is removed. This option enables you to remove and clean the dentures yourself.





Feel like you have natural teeth



How does it work?

Diagnosis and treatment planning

This stage is about deciding the best treatment plan for you. A consultation with an implantologist covering your individual case, medical history, and X-rays or scans will provide a suitable solution.

Implant surgery

At this stage, your dental implant – the titanium root – will be surgically placed into your jawbone. In most cases, the implant surgery is a minor procedure as it is most commonly performed under local anesthesia.

Healing

After surgery, the implant needs time to integrate with your jawbone. How long this takes varies from case to case. For some, this healing period can take six weeks, for others, six months. During the healing phase, a temporary tooth, denture or bridge can be put in place.

Final restoration

This is when the final abutment and restoration are connected to your dental implant.

Looking after your implants

Although the initial cost of an implant may seem higher, with the right care and a good oral hygiene routine, your investment in your health and quality of life can last a lifetime. Your dentist will provide you with the best post-operative care instructions.

Why it makes economic sense

Our teeth play a fundamental role in our overall health; dental problems can affect what we eat, and the overall appearance of our teeth can affect our self-confidence.

Dental implants are a key treatment option for many with damaged, broken, or decayed teeth, and the transformation can be life-changing. The process can seem expensive or intimidating for some patients, and a 'quick fix' might be appealing; however, temporary procedures may be unreliable, which could lead to significant treatment in the future.

Neoss is renowned for its manufacturing quality and service, and is available in over 30 countries worldwide.

Your dentist will come up with a treatment plan once you have had a consultation to determine what care is required.





Improve your quality of life



Invest in the rest of your life

Why choose a dental implant from Neoss?

Neoss products are performance backed by excellent long term clinical data. Every product we develop is designed with patient health and well-being in mind. Incorporating the latest technologies, best production methods, and finest materials, our implant system gives dentists the most intelligent tool for restoring smiles.

Supported by science

Our implants are manufactured in Sweden using high-quality, medical grade titanium with an excellent success rate; as shown in clinical studies with up to a 10 year follow-up. Titanium is considered to be the most biocompatible material due to its high strength, durability, and capacity to integrate with bone. Titanium is a material that is well accepted by the body; therefore, allergic reactions are very rare.

FAQ

Where can I find a dental clinician who can treat me?

It is important to find a well-qualified clinician with experience in this field. When it comes to finding an accessible and appropriate provider, specialist associations and local groups offer the best advice.

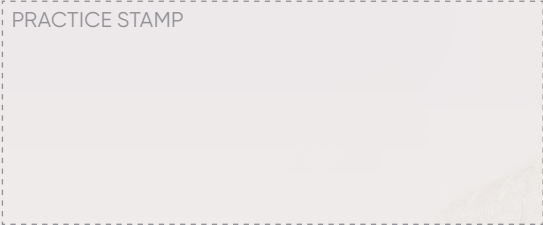
How long will dental implant surgery and treatment take?

For a single implant, the implant procedure itself may take as little as 20 minutes. However, if several teeth need replacing or bone grafting is needed, this will lengthen the surgery. The healing process can take several months, as you need to allow the bone around the implant to heal and integrate.

Where can I get advice on dental treatment?

Ask your general dentist if they offer dental implants or can refer you to an implantologist, who will answer your questions.

Ask your clinician
about dental
implants today!



neoss.com

10393_10 EN 18-12 © Neoss Limited, 2018. Copyrights, design rights and trademarks in this document are Neoss documents, software and designs may not be reprinted, copied or published in whole or in part, without the written authorization of Neoss Limited. Neoss and the 'N' logo are registered trademarks of Neoss Ltd.